

The British Ports Association represents a national network of 99 ports of every size and type.

“All ports, whatever their size, location or ownership, deserve representation on an equal basis”

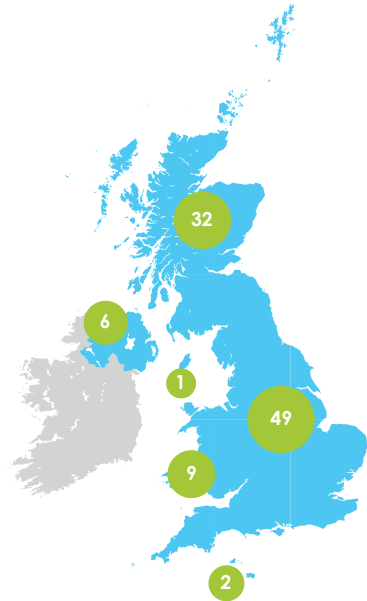


## Membership profile

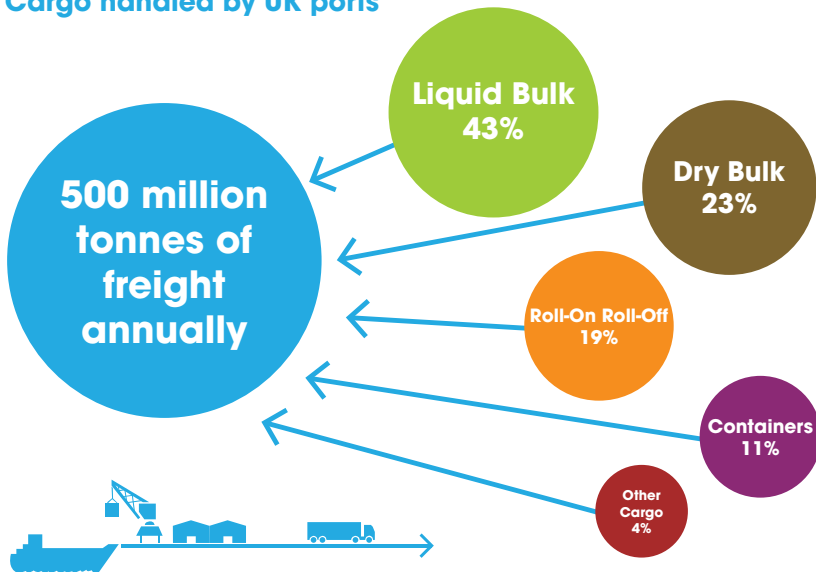
The BPA represents 99 port authorities owning and managing over 350 ports and harbours of all sizes around the UK. These cover every port corporate model and every type of trade. We also represent a network of 60 Associate Members, including maritime law and insurance firms, equipment and service suppliers, engineering, environmental and consultancy specialists.



## Where are BPA member ports located?



## Cargo handled by UK ports



“95% of all UK trade passes through ports, supplying consumers and the economy”

## Ports in the logistics chain

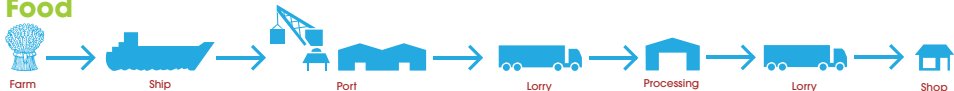
### Consumer goods



### Raw materials



### Food



## A regulatory maze...

...ports work within a complex and diverse operational and regulatory environment. The BPA helps ports to navigate the maze.



## Supporting other industries

As well as handling cargo, ports play a vital role supporting other industries:

Cruise 

Engineering and ship maintenance 

Fishing 

Leisure and tourism 

Marine renewables 

Offshore oil and gas 

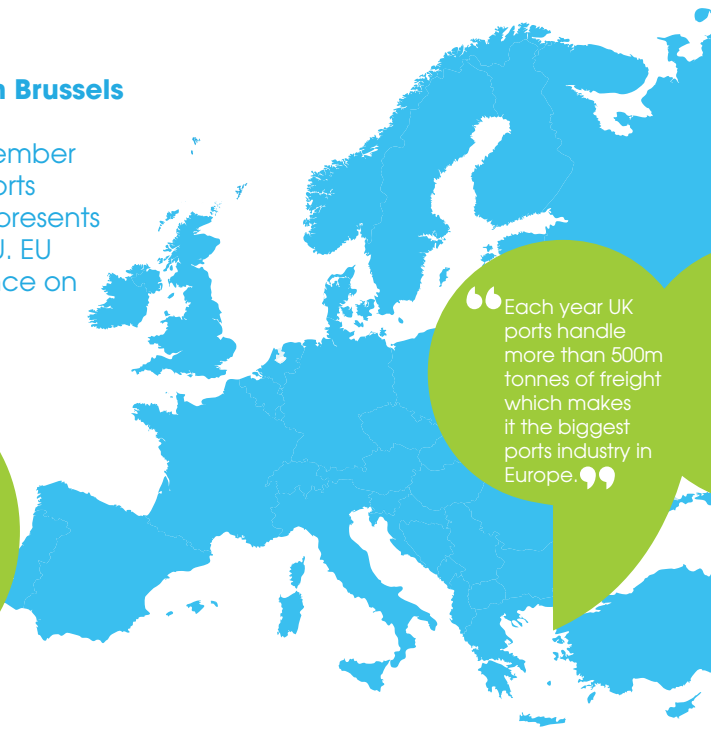
Logistics 

## Active engagement in Brussels

The BPA is an active member of the European Sea Ports Organization, which represents ports throughout the EU. EU policy is a major influence on trade and port activity.

“ 90 % of Europe’s trade passes through over 1,200 seaports in the EU and more than 400 million passengers use Europe’s ferry and cruise ports every year. ”

“ Each year UK ports handle more than 500m tonnes of freight which makes it the biggest ports industry in Europe. ”



## Jobs and the economy

Ports directly employ almost 120,000 people - one in every 270 jobs in the UK



Ports contribute £7.9bn in value-added to the UK's GDP - equivalent to 0.5% of total economic activity



“Ports are significant economic drivers”

## Cargo

Each year 95% of UK trade passes through its ports

Each year UK ports handle over 500m tonnes of freight

Each year UK ports handle over 60m ferry and cruise passengers

Each year UK ports handle over 5 million freight vehicles

Each year £660m worth of fish are landed at UK ports



## Careers - who do we need to run our ports?

**Business Manager, Harbour Master, Pilot, Chairman, Port Engineer, Environment Officer, Electrician, Crane Operator, Forklift Driver, Port Director, Moorings Assistant, Finance Manager, Deckhand, Admin Officer, Marketing Officer, Communications Officer, Maintenance Engineer, Board Member, Legal Adviser, Deputy Chairman, Personal Assistant, Passenger Marshall, Deputy Harbour Master, Office Manager, Port Manager, Stevedore, Company Secretary, Mechanic, Operations Manager, Health and Safety Officer, Public Relations Manager, Bunkering Manager, Chief Executive, Training Manager, IT Manager, Marina Manager, Corporate Affairs Manager, Security Officer, VTS Manager, Coxswain, Clerk, Marshall, Premises Manager, Procurement Officer, Surveyor, Planning Officer, Hydrographic Officer, Traffic Marshall, Human Resources, Project Manager, Building Services Manager, Marine Officer, Commissioner**

